

Dr. Husband said programs like R-ITI help trainees with other responsibilities complete medical study programs because they won't always have to be at the hospital. "It is flexible—they can do this work when they are at home," she said. She said she hopes to move the program forward by creating a learning matrix with other specialties

The program is flexible—[trainees] can do this work when they are at home.

Janet Husband, F.Med.Sci., F.R.C.P., F.R.C.R.

such as emergency medicine.

The group also foresees sharing its program with the developing world, where the cost of training can be a problem. They said they will explore

offering the program for free through the World Health Organization, the United Nations and other funding organizations. □

■ Note: These articles were adapted from stories that appeared in the RSNA 2006 *Daily Bulletin*.

Daily Bulletin

The daily newspapers from the annual meeting are available online at RSNA.org/bulletin.

■ To read the abstract of the presentations, go to the RSNA Meeting Program at rsna2006.rsna.org. The direct link for "e-learning in Radiology Training—A National Solution: The Royal College of Radiologists' Integrated Training Initiative" is rsna2006.rsna.org/rsna2006/V2006/conference/event_display.cfm?id=66601&em_id=8002378.

■ The direct link for "The Teleradiology Network of Greenland" is rsna2006.rsna.org/rsna2006/V2006/conference/event_display.cfm?id=66601&em_id=4437850.

Teleradiology Faces Ultimate Challenge on World's Largest Island

SOME 2,000 miles away from the United Kingdom in Greenland, technology has been put to a different kind of test. The race to connect widely dispersed healthcare facilities may face no bigger hurdle than in Greenland, 85 percent of which is covered by an ice cap and has no roads or railways connecting its towns and settlements.

Presenting the Teleradiology Network of Greenland project at RSNA 2006, Uwe Engelmann, Ph.D., M.S., reported that all images of any of Greenland's patients are now available at every hospital. The result is improved medical care for people in inaccessible regions, said Dr. Engelmann, of the German Cancer Research Center's Department of Medical and Biological Informatics in Heidelberg and co-founder of CHILI GmbH, the center's spin-off digital radiology company.

Greenland, at more than

800,000 square miles, is the largest island in the world. Its population of more than 56,000 lives in 18 towns and some 60 settlements, mainly along the ice-free rim of the coastline. The island is divided into 16 healthcare districts, with 15 district hospitals scattered along the coastline and a national hospital in the capital city of Nuuk.

The national hospital computer gateway is connected to the network's central picture archiving and communication system (PACS) and radiology information system (RIS), which holds all image data and reports for the whole country. If transmission to the central gateway is interrupted, external gateways continue transfers automatically when the network is up again. In addition, when a new study arrives at a teleradiology gateway, existing studies of the same patient are automatically retrieved as well.

Getting the network in



The Teleradiology Network of Greenland has improved care for people in inaccessible regions, said Uwe Engelmann, Ph.D., M.S., in an RSNA 2006 presentation.

place was challenging, said Dr. Engelmann. Most towns and settlements are linked by either radio or satellite, but those systems are relatively unreliable due to heavy snow storms and power outages. The high turnover rate of medical personnel and a lack of information technology professionals in the district hospitals were other obstacles to overcome.

The solution was to make the local gateways, the teleradiology network's key components, easily configurable for different application scenarios and protocols, with integrated

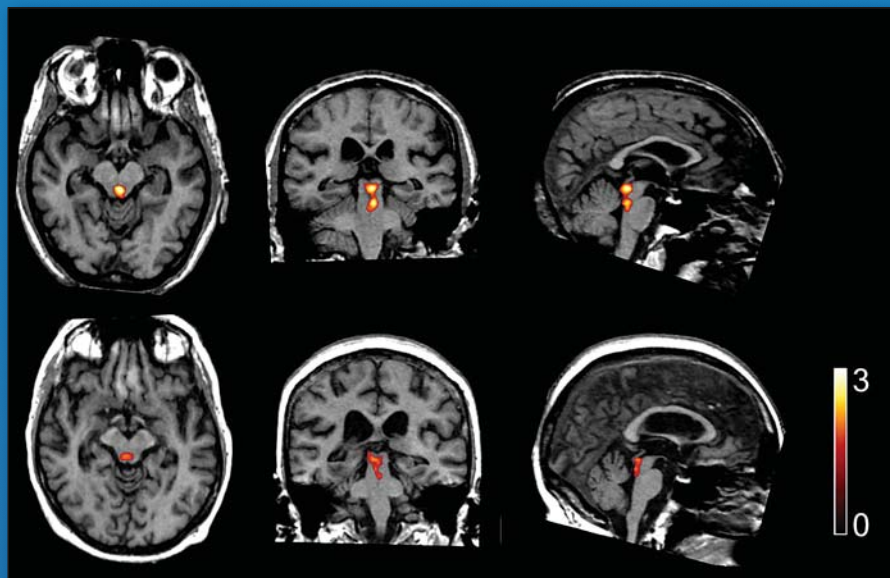
security and failure measures and no need for users to install specific software on their computers.

The system also provides critical user authentication and emergency accounts that can be used when the directory is not available. Each authorized user has access to every image and report created in the network.

The program showed the feasibility of establishing reliable blackbox solutions supporting medical care for people in inaccessible regions, said Dr. Engelmann.



RSNA *News*



RSNA Scholar Uses PET as Key to Unlock Mysteries of Elderly Brains

Also Inside:

- Radiation Protection Becomes Personal, Professional Priority
- E-Learning Program Puts Dent in U.K. Radiologist Shortage
- Residency Study Can't Explain Gender Gap in Radiology Specialty
- Brains Respond Better to Name Brands, fMRI Shows

Abstract Deadline for RSNA 2007
April 15, 2007

RSNA News

- 1 **Announcements**
- 2 **People in the News**
- 3 **My Turn**
- Feature Articles**
- 4 **Radiation Protection Becomes Personal, Professional Priority**
- 6 **E-Learning Program Puts Dent in U.K. Radiologist Shortage**
- 8 **Residency Study Can't Explain Gender Gap in Radiology Specialty**
- 10 **Brains Respond Better to Name Brands, fMRI Shows**
- Funding Radiology's Future®**
- 12 **RSNA Scholar Uses PET as Key to Unlock Mysteries of Elderly Brains**
- 13 **R&E Foundation Donors**
- 15 **Journal Highlights**
- 17 **Radiology in Public Focus**
- 18 **RSNA: Working for You**
- 20 **Program and Grant Announcements**
- 22 **Meeting Watch**
- 24 **Product News**
- 25 **RSNA.org**

RSNA News

March 2007 • Volume 17, Number 3

Published monthly by the Radiological Society of North America, Inc., at 820 Jorie Blvd., Oak Brook, IL 60523-2251. Printed in the USA.

POSTMASTER: Send address correction "changes" to: *RSNA News*, 820 Jorie Blvd., Oak Brook, IL 60523-2251.

Nonmember subscription rate is \$20 per year; \$10 of active members' dues is allocated to a subscription of *RSNA News*.

Contents of *RSNA News* copyrighted ©2007 by the Radiological Society of North America, Inc.

Letters to the Editor

E-mail: rsnanews@rsna.org

Fax: 1-630-571-7837

RSNA News

820 Jorie Blvd.

Oak Brook, IL 60523

Subscriptions

Phone: 1-630-571-7873

E-mail: subscribe@rsna.org

Reprints and Permissions

Phone: 1-630-571-7829

Fax: 1-630-590-7724

E-mail: permissions@rsna.org

RSNA Membership

1-877-RSNA-MEM

EDITOR

Bruce L. McClelland, M.D.

CONTRIBUTING EDITOR

Robert E. Campbell, M.D.

MANAGING EDITOR

Lynn Tefft Hoff

EXECUTIVE EDITOR

Natalie Olinger Boden

EDITORIAL ADVISORS

Dave Fellers, C.A.E.

Executive Director

Roberta E. Arnold, M.A., M.H.P.E.

Assistant Executive Director

Publications and Communications

EDITORIAL BOARD

Bruce L. McClelland, M.D.,

Chair

Silvia D. Chang, M.D.

Colin P. Derdeyn, M.D.

Richard T. Hoppe, M.D.

David M. Hovsepian, M.D.

Valerie P. Jackson, M.D.

Jonathan B. Kruskal, M.D., Ph.D.

Steven M. Larson, M.D.

Hedvig Hricak, M.D., Ph.D.,

Board Liaison

N. Reed Dunnick, M.D.

Board Liaison-designate

CONTRIBUTING WRITERS

Nicole Grasse, M.A.

Locke Peterseim

Marilyn Idelman Soglin

Lydia Steck, M.S.

Rachelle Treiber

GRAPHIC DESIGNER

Adam Indyk

2007 RSNA BOARD OF DIRECTORS

Gary J. Becker, M.D.,

Chair

Hedvig Hricak, M.D., Ph.D.,

Liaison for Publications and Communications

Burton P. Drayer, M.D.,

Liaison for Annual Meeting and Technology

George S. Bisset III, M.D.,

Liaison for Education

Sarah S. Donaldson, M.D.,

Liaison for Science

N. Reed Dunnick, M.D.,

Liaison-designate for Publications and Communications

R. Gilbert Jost, M.D.,

President

Theresa C. McLoud, M.D.,

President-elect